

# Overseas Registration Examination Part 1 Results for July 2019

Candidates have been sent their individual marks by email and may wish to use these charts to compare their performance with others.

For each paper, the normalised pass mark is 50%.

The table below provides a description of the mark ranges and how they compare to the pass mark:

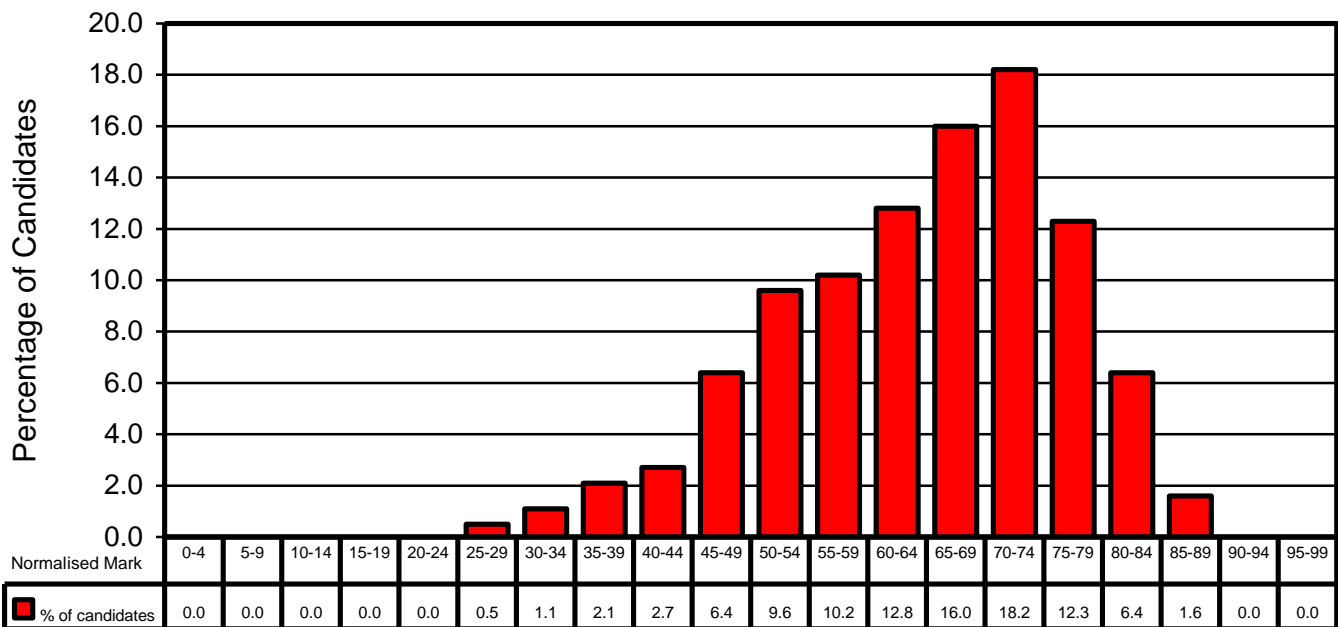
Mark	Range Description
0-39	Fail
40-49	Borderline Fail
50-59	Pass
60-69	Good Pass
70-79	Excellent Pass

---

The table below shows the percentage of candidates passing each part of the examination:

Examination Part	Pass Rate (%)
Part 1(a)	87
Part 1(b)	61
Part 1(a) & 1(b)	61

## Distribution of Results for ORE Part 1(a)



## Distribution of Results for ORE Part 1(b)

